

SH5.0/6.0/8.0/10RT

Residential Hybrid Three Phase Inverter



FLEXIBLE APPLICATION

- 150–600V wide battery voltage range
- Supports parallel connection with master-slave controlling
- Provides 100% power to unbalance loads in backup mode

SMART MANAGEMENT

- High self-consumption with optimised built-in EMS
- Free online monitoring to enhance energy management for end user, installer and retailer
- Remote firmware update and customisable settings

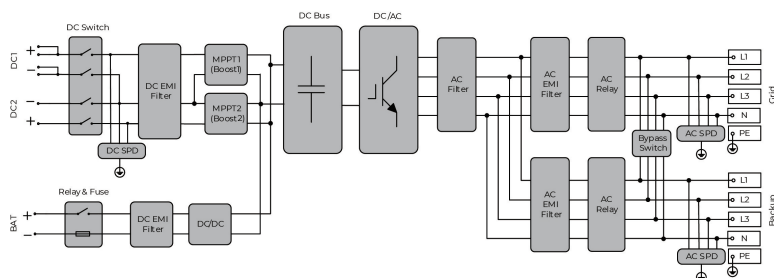
ENERGY INDEPENDENCE

- Seamless transition to backup mode for protection against power outages
- Fast charging / discharging to meet the demand of higher consumption

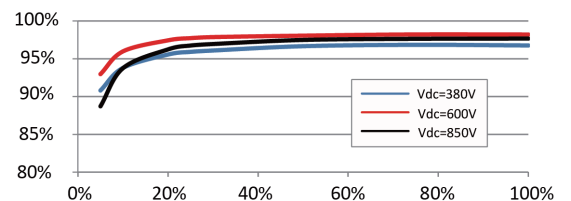
EASY INSTALLATION

- Unique push-in connectors for time-saving installation
- Touch free commissioning with smartphone
- Lightweight and compact

CIRCUIT DIAGRAM



EFFICIENCY CURVE



Type designation	SH5.0RT	SH6.0RT	SH8.0RT	SH10RT
PV Input				
Recommended max. PV input power	7500 W	9000 W	12000 W	15000 W
Max. PV input voltage	1000V	1000 V	1000V	1000V
Startup voltage	180 V	250 V	250 V	250 V
Rated input voltage		600 V		
MPP voltage range	150 V – 950 V	200 V – 950 V	200 V – 950 V	200 V – 950 V
MPP voltage range for nominal power	210 V – 850 V	250 V – 850 V	330 V – 850 V	280 V – 850 V
No. of MPPTs		2		
Max. number of PV strings per MPPT	1 / 1	1 / 1	1 / 1	1 / 2
Max. PV input current	25A (12.5A / 12.5A)	25A (12.5A / 12.5A)	25A (12.5A / 12.5A)	37.5A (12.5A / 25A)
Max. current for input connector		30 A		
Short-circuit current of PV input	32 A (16 A / 16 A)	32 A (16 A / 16 A)	32 A (16 A / 16 A)	48 A (16 A / 32 A)
AC Input and Output				
Max. AC input power from grid	12500 W	15000 W	18600 W	20600 W
Rated AC output power	5000 W	6000 W	8000 W	10000 W
Max. AC output power	5000 VA	6000 VA	8000 VA	10000 VA
Rated AC output apparent power	5000 VA	6000 VA	8000 VA	10000 VA
Rated AC output current	7.3 A	8.7 A	11.6 A	14.5 A
Max. AC output current	7.6 A	9.1 A	12.1 A	15.2A
Rated AC voltage	3 / N / PE, 220 / 380 V; 230 / 400 V; 240 / 415 V			
AC voltage range	270 - 480V			
Rated grid frequency / Grid frequency range	50Hz / 45 - 55Hz, 60Hz / 55 - 65Hz			
THD	<3% (of rated power)			
DC current injection	<0.5% In			
Power factor	>0.99 / 0.8 leading to 0.8 lagging			
Protection & Function				
LVRT		Yes		
Anti-islanding protection		Yes		
AC short circuit protection		Yes		
Leakage current protection		Yes		
DC switch (solar)		Optional		
DC fuse (battery)		Yes		
Overvoltage category	III [MAINS], II [PV] [BATTERY]			
SPD	DC Type II / AC Type II			
Battery input reverse polarity protection		Yes		
Parallel operation on grid port / Max. No. of inverters	Master-slave mode / 5 * (need same inverters type)			
Battery Data				
Battery type	Li-ion battery			
Battery voltage	150-600V			
Max charge / discharge current	30A ** / 30A **			
Max charge / discharge power	7500W / 6000W	9000 W / 7200 W	10600 W / 10600 W	10600 W / 10600 W
System Data				
Max. efficiency	98.0 %	98.2 %	98.4 %	98.4 %
European efficiency	97.2 %	97.5 %	97.9 %	97.9 %
Isolation method (solar / battery)	Transformerless / Transformerless			
Degree of protection	IP65			
Operating ambient temperature range	-25 °C – 60 °C			
Allowable relative humidity range (non-condensing)	0% - 100%			
Cooling method	Natural convection			
Max. operating altitude	4000 m (>3000 m Derating)			
Noise (Typical)	30dB (A)			
Display	LED			
Communication	RS485, WLAN, Ethernet, CAN, 4×DI, 1×DO			
DC connection type	MC4 (PV) / Sunclix (Battery)			
AC connection type	Plug and play connector			
Compliance	IEC / EN 62109, IEC / EN 61000-6, EN 62477-1, IEC 61727, IEC 62116, IEC 61683, VDE-AR-N-4105, AS/NZS 4777.2:2020, EN50549-1, NRS 097-2-1, TOR Generator Type A			
Country of manufacture	China			
Mechanical Data				
Dimensions (W * H * D)	460 * 540 * 170 mm			
Mounting method	Wall-mounting bracket			
Weight	27 kg			
Backup Data				
Rated voltage	3 / N / PE, 220Vac / 230Vac / 240Vac			
Frequency range	50Hz / 60Hz			
Total harmonic factor output voltage (Linear load)	2%			
Switch time to emergency mode	<20ms			
Rated output power	5000 W / 5000 VA	6000 W / 6000 VA	8000 W / 8000 VA	10000 W / 10000 VA
Peak output power ***	6000 W / 6000 VA, 5min 10000 W / 10000 VA, 10s	7200 W / 7200 VA, 5min 10000 W / 10000 VA, 10s	12000 W / 12000 VA, 5min	12000 W / 12000 VA, 5min
Rated output current for backup load during on grid mode	3 * 18.5 A			

*: Germany is available for 2 inverters parallel in maximum if no ripple control is used in system **: Depending on the connected battery

***: Can be reached only if PV and battery power is sufficient.